

# THE ICE THAT MELTS TOO FAST THE CLIMATE THAT CHANGES TOO QUICKLY

ARCTIC SEA ICE REFLECTS ABOUT 80% OF THE SUN'S HEAT, STABILIZING THE COLDER TEMPERATURES OF THE OCEAN.

Based on the latest satellite data cited in a December 2007 article, National Aeronautics and Space Administration (NASA) climate scientist Dr. H. J. Zwally predicts that nearly **ALL THE ICE COULD BE GONE** from the Arctic Ocean by **THE END OF THE SUMMER MELT SEASON IN 2012.**



“We have to save this planet, so that we'll be able to stay, first.”

Because if the ice all melts, if the poles all melt away, and then if the sea is warm, then the gas might be released from the ocean, and we might be poisoned.

If you see the Singapore lecture (January 10, 1995), I already warned that we have to change the way we live; otherwise it's too late. That was 10 or 15 years ago. Or before that, I always talked about how we deforest our planet. Meat eating and all that contributes to a lot of damage to our Earth planet. Scientists say many things. They are listening now, but I just hope they do it fast. It just takes action. All the governments in the world really take it seriously now. It's just that I'm worried the action might be too slow.

Because the ice is reflecting the sun, you see, so it sends it back into space, but the ice is melting so fast now that there's not enough reflection and because the sea is already warm, it melts the ice. And because the ice melts, the sea is warmer. You see what I mean, the cycle?

**The way it is going, if they don't fix it, in 4 or 5 years time, finito. No more. It's really that urgent.**

*Supreme Master Ching Hai*  
World-renowned Humanitarian, Artist and Spiritual teacher  
December 25, 2007 - Paris Seminar

“...BUT IT TURNS OUT THAT MOST OF THE CARBON, ABOUT 93% OF IT, IS IN THE OCEAN, NOT IN TREES OR IN THE ATMOSPHERE. So what's happening right now is we're adding a lot of carbon to the atmosphere. It's coming in much faster than it can go into the biosphere or into the ocean. So THAT'S WHY THE CO<sub>2</sub> IS GOING UP VERY, VERY QUICKLY.”

*Dr. Gerald Dickens*  
Associate Professor of Earth Science Rice University, USA

According to a report from the Institute of Arctic Biology at University of Alaska Fairbanks, **Dr. Katey Walter** states that **METHANE**, a greenhouse gas, currently being released from arctic permafrost and **BUBBLING UP THROUGH LAKES** is accelerating global warming in ways not currently accounted for.

**Dr. Walter says:**  
“...permafrost is like a time bomb waiting to go off—as it continues to thaw, tens of thousands of teragrams of methane can be released to the atmosphere enhancing climate warming. This newly recognized source of methane is so far not included in climate models.”

Research by **Dr. Gregory Ryskin** at Northwestern University indicates that methane explosions from the ocean caused extinctions of 90% of marine species and 75% of terrestrial species 250 million years ago. In his report, “Methane-driven oceanic eruptions and mass extinctions,” he explains how methane gas, which had been trapped in the stagnant waters, was released, leading to the die-off of most marine and land life.

**Dr. Ryskin states:** “...if it happened once, it could happen again.”

## UNITED NATIONS REPORT MEAT EATING IS A MAJOR CAUSE OF GLOBAL WARMING

### MAIN DRIVER OF DEFORESTATION

- Over 70% of the deforested Amazon rainforest is cut down for meat production.

### LARGEST SINGLE SOURCE OF WATER POLLUTION

- Heavy contributor to oceanic ‘dead’ zones, chemical pollution, coral reef die-off, human health problems, and antibiotic resistance.

### POTENT GREENHOUSE GAS EMISSIONS

- Livestock produces MORE GREENHOUSE GASES than all worldwide TRANSPORTATION COMBINED.
- Generates 65% of human-caused nitrous oxide (296 times as warming as CO<sub>2</sub>)
- Accounts for 37% of all human-caused methane (23 times as warming as CO<sub>2</sub>)

“Livestock are one of the most significant contributors to today's most serious environmental problems. URGENT ACTION is required to remedy the situation.”

*Dr. Henning Steinfeld, Chief of Livestock Information and Policy Branch, FAO of United Nations.*

Livestock's Long Shadow: Environmental Issues and Options, Food and Agriculture Organization (FAO) of the United Nations, Rome, 2006.

## WARNING SIGNS

- A United Nations report on the natural disasters in 2007 says nine of the ten worst resulted from climatic disturbances.
- Officials relocated 20,000 islanders in the year 2000 from the lowest area of Duke of York Island, one of the islands off Papua New Guinea.
- Due to overfishing and the loss of tens of millions of vital sardines, waters off the coast of southwest Africa are filled with a toxic gas that is bubbling up from the ocean floor, killing marine life over an area equivalent to the US state of New Jersey and worsening the greenhouse effect.
- Australian oceanographer Dr. Steve Rintoul estimates that the rapid rate of ice melting means that 100 million people living within 1 meter of sea level “will need to go somewhere” to escape rising sea levels.

## TO SAVE LIVES and OUR PLANET

- Research by University of Chicago geophysics professors Dr. Gidon Eshel and Dr. Pamela Martin concludes that going vegan for one year saves 1.5 tons of emissions relative to the standard American diet, 50% more than switching from an SUV to a Toyota Prius.

- “Don't eat meat, ride a bike, and be a frugal shopper... that's how you can help brake global warming.”

*Dr. Rajendra Pachauri, Chief of the UN's Intergovernmental Panel on Climate Change*

- Britain's Energy Saving Trust advises adopting conservation methods to reduce 1/3 of an estimated 6 tons per year of greenhouse gas emissions from the average UK home.

## ARCTIC ICE (SEPT 2007)

- 23% below previous record low (from NASA satellite data)
- 50% below 1950 levels (from ship data)

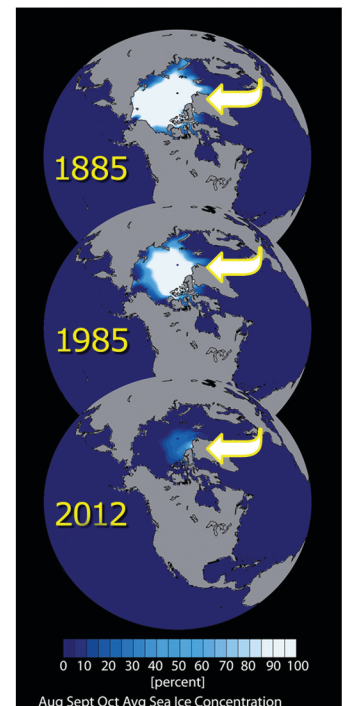
## OTHER RECORDS

- Greenland surface ice loss is now 400% greater than 15 years ago.
- Surface temperatures in the Arctic are the highest in 77 years of record keeping.

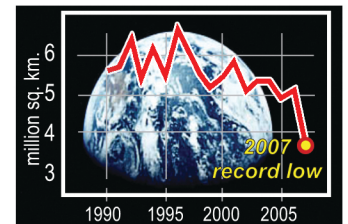
## THERE IS HOPE

According to **Dr. James Hansen**, top climate scientist for NASA: “We have passed tipping points. We have not passed a point of no return. We can still roll things back, but it is going to require a quick turn in direction.”

**FOR MORE URGENT INFO:**  
[www.SupremeMasterTV.com/SOS](http://www.SupremeMasterTV.com/SOS)



## Annual Sea Ice Minimum



URGENT QUIZ

To save our planet, we should:

1. Go Veg?
2. Drive Hybrid Vehicles?
3. Plant More Trees?
4. Change to Sustainable Energy?
5. Pray?

ANSWER THESE + MORE



FOR MORE URGENT DETAILS, LOG ON: [www.SupremeMasterTV.com/SOS](http://www.SupremeMasterTV.com/SOS)

CONTACT:

PLEASE COPY THIS AND GIVE TO MORE PEOPLE - THANKS ♥♥